

ROYAL WHARF

Charting Our Course to Success

PROSPECTUS

WELCOME

Thank you for taking the time to look at our Prospectus.

We hope that it will give you an overview of Royal Wharf Primary, which opens in September 2019 and some key facts about the school. (Please also take a look at our website www.RoyalWharfPrimary.co.uk which gives additional information.)

Britannia Education Trust warmly welcomes you to visit us at our outstanding first school, Britannia Village Primary, in order to give you a flavour of what school life will be like at Royal Wharf. You can arrange this through our school office **0207 511 5412**, and we would be delighted to give you a tour of the school and to answer any questions you may have.

The relationship that we have with you – the parents and carers of our pupils – is extremely important because it is only by us working together, as a team, that your children can make the most of the opportunities at primary school. We understand that you are proud of your children and nothing is more important

to you than ensuring that they have the best start in life. That is why keeping your children safe, happy and continually motivated to learn, is our top priority at Royal Wharf Primary School.

As the executive head, I am often at the gates of our schools in the mornings welcoming families, so if you would like a quick word or just want to say hello, please do not hesitate to do so.

We all very much look forward to getting to know you and to working with you. A very warm welcome to Royal Wharf Primary School.

Best wishes

Linda-May Bingham

BET CEO and Executive Headteacher



ABOUT OUR SCHOOL

Royal Wharf Primary School is situated just south of North Woolwich Road in the new Royal Wharf development. We are a brand new school, deliberately designed it to be small and inclusive so that we can offer a safe, exciting learning environment for local children, with excellent educational opportunities, where every student can reach their full potential.

We admit children between the age of 4 and 11 years and have 60 spaces

available for Reception students to join us in September 2019. We also offer part time nursery education to pupils from the age of 3.

We plan to grow the school a year at a time. However, if there is sufficient demand, we would consider opening classes for older children. Please enquire if you have older primary aged children.



OUR VISION

Our vision is for Royal Wharf Primary School to be at the heart of our culturally diverse community, providing the best learning opportunities for our children, our families and our staff.

We aim to give our pupils the best start in life through providing a creative and happy learning environment where achievement, mutual respect and self-esteem are valued.

We work hard with our pupils in order to empower them to have the necessary knowledge, skills, values, attitudes and understanding to make a positive contribution in a changing world both locally and globally.

We will:-

- Create safe, supportive, caring environments where children can flourish.
- Provide a broad, balanced, child-centred creative curriculum, which is both accessible and appropriate to all our pupils.
- Demonstrate, expect and celebrate excellence in Achievement, Behaviour and Character.
- Develop and nurture an outstanding staff team.
- Be rigorous in the pursuit of inclusion and equity.
- Forge strong partnerships with parents and families.
- Work cooperatively within the trust and with other schools, organisations and stakeholders.
- Equip children to become responsible global citizens, caring for the natural world and making wise, informed choices.
- Involve the school in the community and the community in the school.



Qualities for Life: Growth Mindset • Curiosity • Cooperation • Gratitude • Communication •

HOW WILL MY CHILD LEARN?

Our school nurtures curiosity and creativity through an inspiring, broad and engaging curriculum in which children explore themes that are exciting, stimulate their interest, capture their imagination and provide appropriate challenge. Learning is brought to life through high quality first hand experiences, which engage children's natural curiosity. We use these experiences to deepen and extend their understanding about each other and the world in which they live. Children's learning in each term is supported by exciting trips both in the local and London area and further afield. We enrich their learning using all that London has to offer.

Our curriculum is planned thematically so that children can make links between the different subject areas and construct meaning in more depth. This also allows learning to flow naturally.

Throughout the school children are taught in small classes of around 20 pupils. We believe that this gives us the best opportunity to get to know your children well and to give them personalised support educationally, emotionally and physically.

In Nursery and Reception teaching and learning is centred on purposeful child initiated play and small group work both indoors and outside. Alongside this approach, children have more focused sessions in reading, writing and maths. In year one, we gradually support the children to move to a more structured approach.

Also integral to our approach is the development of desirable character traits and attributes in our children which we believe can support their social and emotional development, improve academic attainment and promote positive mental health. It also instils children with a moral compass and skills in understanding and interacting with other people. To this end we focus on developing the '**Qualities for Life**' and incorporating them into the children's learning.

Our children learn to become resilient and self-assured in an outstanding and supportive environment. Everyone is challenged and encouraged to thrive and achieve as individuals, preparing them for their role as caring and active citizens in modern Britain.

Resourcefulness • Hard Work • Grit • Zest • Resilience • Respect • Morality • Self-Management • Reflective Thinking





HOW WILL THE SCHOOL KNOW IF MY CHILD NEEDS ADDITIONAL HELP AND HOW WILL THE SCHOOL SHARE INFORMATION WITH ME?

Some children may have specific needs for aspects of their learning. Where this is the case, children are offered extra support and may have a personalised curriculum. Children's progress is closely monitored and reviewed at regular intervals and we have access to a range of support agencies in order to help meet their needs. We consider the needs of the whole child and ensure that support is focused on individual need and personal outcomes.

As your child's first educator, we value your views and offer support through regular communications where we:

- Listen to any concerns you may have.
- Plan any additional support your child may receive.
- Share strategies.
- Discuss with you any referrals to outside professionals to support your child's learning.

We recognise that children's needs may change and our purpose is to work out how best to support them. The school's experienced SENCo will work with their family to meet their needs and personalise the curriculum when necessary.



HOW IS THE DAY ORGANISED?

School begins at 8:45am and ends at 3:15pm with 75 minutes for breaks and lunch.

Registration in the morning takes place from 8:45 to 8:50am.

Nursery sessions are for 3 hours either morning (8:45 - 11:45am) or afternoon (12:15 to 3:15pm).

A variety of enrichment clubs are on offer, free of charge, for children in years one to six from 3:15 to 4:15pm. These are

not intended as child-care and are not available every day.

Lunchtime:

We encourage children to remain in school and enjoy the school meals which are nutritionally balanced and always offer a choice. Menus are available from the school office. Currently in Newham school meals are free to all primary aged pupils.

Please notify the school of any allergies at your child's admission interview.

It is essential that your child arrives promptly at school every day, ready to learn. Children who are late are likely to miss out on crucial knowledge and teaching, which makes learning more difficult for them. In addition, regular routines enhance children's sense of security and foster good habits for later life.

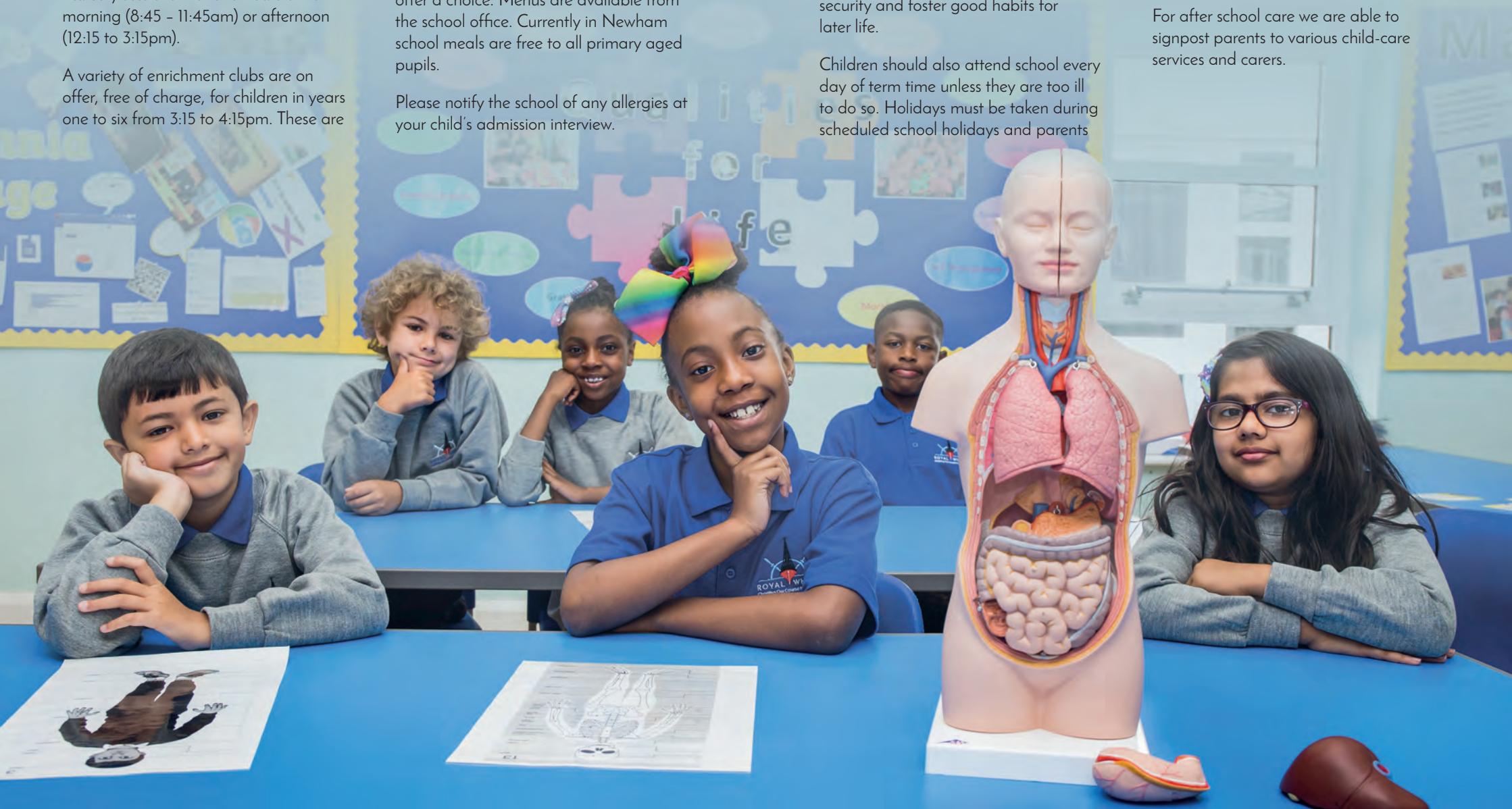
Children should also attend school every day of term time unless they are too ill to do so. Holidays must be taken during scheduled school holidays and parents

who take their children on holiday during term time will incur a fine.

Out of hours Child Care:

A before school club is offered for children of working parents. There is a small charge for this service.

For after school care we are able to signpost parents to various child-care services and carers.





UNIFORM

Children should wear uniform every day (optional in Nursery). Please label it. Sweatshirts and T-shirts are available from the school or from our supplier:

Ian Howard Schoolwear,
409 Barking Road, London E6 2JT

School Uniform

- Blue T-shirt with logo.
- Grey sweatshirt with logo.
- Black school trousers, tailored shorts or skirt (reception and year 1 pupils may wear black jogging bottoms).
- Plain black shoes or trainers.
- White or black socks or tights.

PE Kit

- White plain round neck T-shirt.
- Black plain PE shorts or jogging bottoms.
- Trainers.

Jewellery

Children should not wear jewellery other than a small wristwatch and small stud earrings. Earrings must be removed for PE lessons.

Admissions Statement

Children will be admitted to the school in accordance with our Admissions Policy, which can be read on our website.

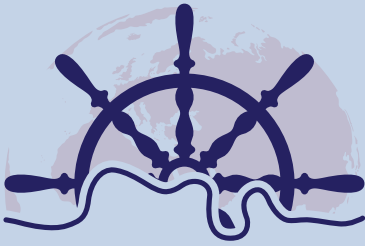
www.RoyalWharfPrimary.co.uk

Championing
Inclusion

Achieving
Excellence



Inspiring
Creativity



BRITANNIA
EDUCATION
TRUST

Championing Inclusion,
Inspiring Creativity, Achieving Excellence

C/O Britannia Village Primary School
Westwood Road, West Silvertown, London, E16 2AW

T: 0207 511 5412 | **E:** royalwharf@britannia-village.newham.sch.uk

