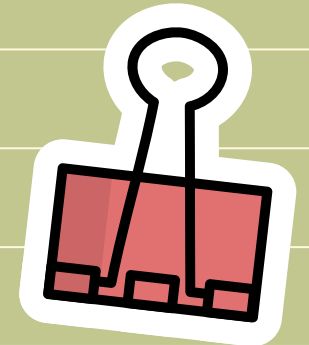


# Next Week's Events - 06/10/25



## Monday

### After School

- Cheerleading

### During School

Year 6 to visit St Pauls Cathedral

## Tuesday

### After School

- Year 6 Reading Club
- Year 3 clubs

## Wednesday

### After School

- Year 2 clubs
- Year 5 Reading Club

## Thursday

### After School

- Year 6 clubs
- Year 5 clubs
- Year 4 & 2 Reading Club
- Ballet Club

### During School

- Galleons to visit local park

## Friday

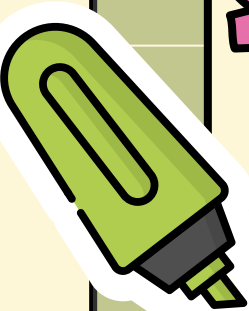
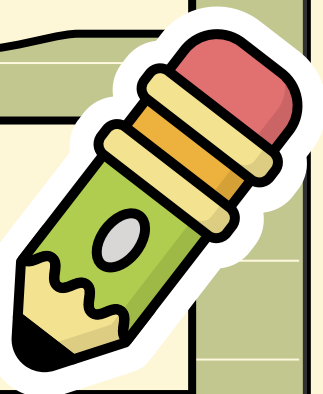
### After School

- Year 1 clubs
- Year 4 clubs
- Year 3 Reading Club
- Cheerleading

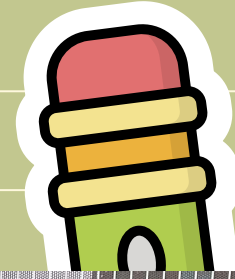
## Notes

### Water Bottles Reminder

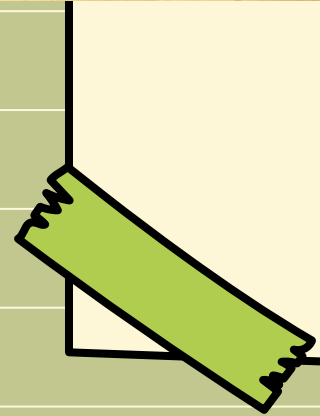
Please ensure your child brings a **reusable water bottle** to school each day. **Single-use water bottles are not permitted.** If you need to purchase a reusable bottle through the school, please make payment via **School Gateway** and contact **the school office.**



# Our Certificate Winners



Well done to all of our certificate winners this week!





Please sign up here:  
<https://sow-theatre-group.classforkids.io/>

# THEATRE WORKSHOP!

AGES 5-11



**Royal Wharf Primary School,**  
London E16 2ZA



Join us every Saturday from **11:00 AM to 2:00 PM** for a fun, creative and empowering workshop where young people explore and express their voices through acting, music, dance and poetry.

**"PLANTING STORIES, GROWING VOICES"**

[sowtheatregroup@gmail.com](mailto:sowtheatregroup@gmail.com)  
 <https://www.sowtheatregroup.com>

@sowtheatregroup  
 +44 7352 345297



# RISING NOTES ACADEMY

## MUSIC LESSONS

PIANO LESSONS  
GUITAR LESSONS  
SINGING LESSONS

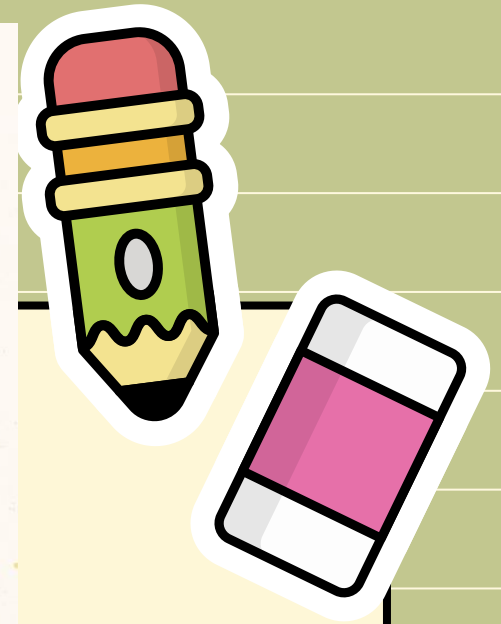
**SIGN UP NOW**



**Little Hudson Cafe,**  
4 Starboard Way, London E16 2PF

At Rising Notes Academy, we believe music builds confidence, creativity, and joy.

**07399 710357**  
[info@risingnotesacademy.com](mailto:info@risingnotesacademy.com)



Please sign here:  
<https://forms.gle/EmkvzXjck7qVbZfs9>

OCT

# OCTOBER 2025

Week	Monday	Tuesday	Wednesday	Thursday	Friday	Saturday	Sunday
# 5			1	2	3	4	5
	Parent - Teacher Consultations this week						
# 6	6 Year 6 visit: St Paul's Cathedral	7 Parent Teacher consultations New to Reception tour	8	9	10	11	12
# 7	13	14	15	16	17 Flu Vaccinations Year 6 visit: Oasis	18	19
# 8	20	21	22 Year 3 visit: British Museum	23	24	25	26
#	27	28	29	30	31		
	Half - Term: School Closed						

NOV

# NOVEMBER 2025

Week	Monday	Tuesday	Wednesday	Thursday	Friday	Saturday	Sunday	
# 1	Half - Term: School Closed							
# 2	3	4	5	6 Year 4 visit: British Museum	7	8	9	
# 3	10	11	12 Pupil Photos	13 Book Fair		15	16	
# 4	17 Book Fair		18	19 Year 5 workshop: Shang Dynasty Year 6 visit: Apollo Theatre	20	21	22	23
# 5	24	25	26	27	28	29	30	